

In This Issue

- **President's Message**
- **2025 Home and Garden Show Meeting**
- **Trustees and Officers**
- **Columbus Turf**
- **Articles Appreciated**
- **Summer Member Meetings**
- **Recycling**
- **Cicadas**
- **Member Meeting Ideas**
- **Box Tree Moth**
- **Alternatives to Boxwood**
- **Support CSCC**
- **Service Area Maps**
- **Sponsors Wanted**
- **2024 Home and Garden**
- **New Members**
- **OSHA**
- **Calendar**
- **Outdoor Safety**
- **Member Application Forms**
- **CLA Zoo Shop**
- **Advertising in NewScape**



Notes from CLA President Kim Spencer

April 2024



Happy Spring...officially!!

Wow! What a spring it has been so far. They say April showers bring May flowers, so I am eagerly awaiting to see these flowers in May after all the rain we have had! I read that so far for 2024 Ohio is leading the country in the most tornadoes per state. At the time of writing this so far there have been 38 confirmed tornados throughout the state. On average Ohio normally only gets 21 tornados in a year! If we keep this rate up, we are going to surpass the most tornadoes we had in one year, which was set back in 1992 with 62 confirmed tornados. That is one record I do not want to break!!!

April not only has been a crazy month for weather, but we also had the chance to see the Total Solar Eclipse! I will admit, although I was excited for it to happen, I did not quite understand why there was so much hype leading up to it. Until that day that is!! Although, where I live we only had the totality for roughly 40 seconds, it was incredible to see and get to experience with my family. Hopefully, you were able to enjoy it too! If not, I highly recommend traveling to see one soon. I would say I will catch the next one in Ohio, but as my son so “kindly” pointed out that I will be dead the next time that happens...gee thanks kid!

Speaking of once in a lifetime experiences, I am a little bummed that we are not part of the Cicada madness that is going to be occurring in parts of the Midwest when the Brood XIX and the Brood XIII cicadas emerge at the same time. Of course, I can say that since I do not live near a wooded area. If I did, I am convinced that my children would not leave the house for the entire month that they were flying around. It was hard enough to get them to walk in a park a few years ago when we had all of the cicadas. But being the good mom I am I forced them along so they could experience it! HA! Thankfully, the cicadas do not kill the mature trees and hopefully anyone in the area can keep their young trees covered to keep them protected.

Even though we are not battling the emerging cicadas and having to constantly keep an eye to the sky for the weather, we still have our normal challenges that spring brings. The dandelions are coming out in full vengeance and filling the lawns. Hopefully, you were able to get them treated early to keep them from getting out of control. The other challenge spring brings is the start up of the mowing season and this weather is not helping it! Homeowners seem to always to forget that most landscape companies do not have the luxury of waiting for a dry day and need to keep to a schedule. This unfortunately means that even if it is raining it is likely the crew will still be there!

Get out and enjoy the beautiful weather while you can since Ohio always likes to keep us on the edges of our seats!! Before you know it, we will all be needing that sunscreen and looking for those shade trees!!

If you have any topics you would like to hear more about, or ever have any questions for me please email me at kspencer@benchmarkohio.com. I look forward to hearing from you and having a great 2024 with everyone!

Kim Spencer

President of CLA

2025 Home and Garden Show Informational Meeting May 28th

The 2025 Home and Garden Show Planning is about to begin.

An informational meeting for those would like more information before committing to the 2025 and / or interested in participating will be held **Tuesday, May 28th, Noon, Oakland Nursery Educational Building, 1156 Oakland Park Ave. 43224.**

2025 Home and Garden Show – ALL MEETINGS are currently planned for the LAST Tuesday of each Month at NOON. Oakland Nursery Educational Building. (Zoom Meeting will be scheduled if necessary).

Please Mark your calendars:

May 28th, June 25th, July 30th,

August 27th, September 24th,

October 29th.

All Meetings will begin at Noon.



2024 CLA Board

Kim Spencer—
2024 President
Benchmark Landscape
Construction

Dan McCarthy—
Past President
Quality Yard and Home
Maintenance

Ellen Gallucci Purcell -
Treasurer
2025 Home & Garden show
Chair
Riepenhoff Landscape Ltd.

Fred Blyth- Secretary
Worthington Landscape

Jason Bornhorst-
President Elect
2024 Home & Garden Show
Chair
Willoway Nurseries

Crystal Harrell - Trustee
Ryan's Landscaping

Mike Moulton— Trustee
Cromwell Landscape

Libbie Turk— Trustee
Ahlum and Arbor

ColumbusTurfNursery

Browse our Web site : Call [740-983-8873](tel:740-983-8873) to order or email us for more information at colturf@columbus-turf.com



NEW EASY EMPTY™ SYSTEM

Our newly designed BigYellowBag® with Easy Empty System makes your job easier when removing the garden soil.



Hours: M-F: 7:30A - 6P Sa: 9A-2p Su: CLOSED!

14337 US Highway 23
Ashville, OH 43103

Articles Appreciated

I am always looking for articles and additional information to share with CLA Members Send info. and Articles to

info@columbuslandscape.org

Share Company Good News
Equipment for Sale
Have Safety Tips

Share Employee Accomplishments
Hosting CEU classes
Learn Any New Techniques

Have professional articles and tips you want to share with members.

Member Meetings and Summer Activities Being Planned.

Planning for future Member Meetings are in the works.

- + **July** we will be a tour **Seely's Landscape Nursery and Plant Collection**.
- + **August** a Field Trip to **Willoway Headquarters** in Avon is coming together.
- + **This fall** in planning stages. We will be joining the students of **CSCC** with **Dick Ansley**.

Future details and registration information will be sent to you in the weekly emails and **NewScape Express** issues.

Start A Habit - Plan to Recycle in 2024

You can participate in this effort by starting a routine with employees. At the end of an installation or at the end of each day, please remember to sort your containers.

Recyclables labeled 2, 5 and 6 qualify as well as FLATS, CELLPACKS, and TAGS.

Containers do not have to be sparkling clean, a little soil is acceptable. Collection of these materials and packaging will begin in July. More details will be available soon. Interested in starting a recycling program?

Contact **Amanda Murphy** at
MJDesign 614-873-7333
amurphy@mjdesignassoiciates.com



Central Ohio is missing out on the 2024 super emergence of Cicada. We will see a large Cicada presence in 2037.

Ohioline

Ohio State University Extension

[Home](#)

[Advanced Search](#)

[About](#)

[OSU Extension](#)

Periodical and "Dog-Day" Cicadas

David J. Shetlar and Jennifer E. Andon, Department of Entomology

Cicadas are large insects (Order: Hemiptera) that occur worldwide and are commonly recognized for their unique sound. While often referred to as "locusts" in the United States, they bear no relation to true locusts, which are grasshoppers. Cicadas are closely related to leafhoppers and spittlebugs. Cicadas can be found all over the world as symbols, representing transformation, reincarnation and immortality.

Identification

Periodical cicadas, *Magicicada* spp., are the best known and longest lived species of insect in North America. These insects are approximately 1.5 inches long, and they have clear wings with orange veins that are held rooflike over their bodies. Periodical cicadas occur only in North America. They are characterized by having regional broods that emerge in mass every 13 or 17 years. "Dog-day," or annual cicadas, are larger than periodical cicadas and have green to brown bodies with black markings and a whitish bloom. These cicadas emerge in midsummer every year. Cicadas have prominent eyes set wide apart on the head with short, hairlike antennae. The periodical cicada has distinct reddish-orange eyes.



Annual cicada adult.



Cicada nymph.

Life Cycle

Adult cicadas live only for two to four weeks. During this short time, they feed relatively little by sucking fluid from tender, young twigs. Male cicadas sing to attract females by vibrating membranes on the underside of the first abdominal segment. Female cicadas are silent.

Approximately 10 days after molting, female cicadas will mate and begin laying eggs in tree branches $\frac{1}{4}$ - to $\frac{1}{2}$ -inch in diameter. She uses her long, sharp ovipositor to make slits in small tree branches, creating pockets in the branch. Each pocket may contain 20–28 eggs. Eggs are elongate and pearly white in color. The female continues laying eggs in rows along the branch. She may lay from 400 to 600 eggs in her lifetime at various sites. Six to 10 weeks later, the white antlike nymphs emerge and drop off the tree branch onto the ground below. They typically burrow 6–18 inches into the soil and begin feeding on plant roots. During the spring of an emergence year, periodical cicada nymphs may build mud tubes that project 3–5 inches above the soil, apparently to escape wet or saturated soils.



Periodical cicada adult, feeding.



Periodical cicada adult, emerging.

Cicadas live most of their lives underground in the nymphal stage. They typically reside in the soil at depths ranging from 1–8 feet, where they use their sucking mouthparts to feed on the sap from tree roots. Cicadas undergo approximately three to five nymphal instars. Periodical cicadas emerge in specific locations once every 17 years in the northern part of their range (including Ohio), and once every 13 years in the southern part, with some overlap in distribution (Figure 1). The "dog-day," or annual cicadas, appear during the long summer days of July and August. These cicadas have two- to five-year life cycles, but adults appear every summer.

Adult emergence typically occurs at night. Mature cicada nymphs crawl out of the soil, leaving behind a ½-inch hole. They crawl up nearby trees, vegetation or other vertical objects to molt. Their shed outer skins, or exoskeletons, may be found attached to tree trunks and twigs.

Periodical cicada emergence is often tightly synchronized, with most nymphs appearing within a few nights. Different groups called "broods" emerge somewhere in the eastern United States almost every spring. Ohio has four broods that emerge at different years (Figure 1). Massive brood emergence, usually in May and early June, is believed to overwhelm predators, typically birds. This ensures that enough survivors will be left behind to reproduce. Male cicadas are capable of making a loud buzzing noise, and they squawk when disturbed. The males often synchronize their buzzing in trees. Within each brood there are four or more species. Each species has a different call. It is believed that such droning and squawking is effective in deterring predators.

Annual cicadas usually emerge from June through August. Their emergence is scattered over this time, and they rarely emerge in noticeable numbers. Annual cicada males also sing to attract females. The cicada killer wasp often captures these insects to provision its nest in the ground.

Damage

Periodical cicadas damage trees above and below ground. The most obvious damage is that caused by egg-laying in small twigs. This damage causes twigs to split, wither and die, causing a symptom called "flagging." Flagging is especially serious on young plants (four years or younger) because more of the branches are of the preferred size for oviposition, ¼- to ½-inch in diameter. Some of the more favored trees for oviposition include maple, oak, hickory, beech, ash, dogwood, hawthorn, magnolia, willow, apple, peach, cherry and pear. Flowers, vines and shrubs include Rose of Sharon, rose, raspberry, grape, black-eyed Susan, hollies, spirea, rhododendron, viburnum, junipers and arborvitae. More than 270 species of plants have been noted as hosts for egg-laying periodical cicadas.

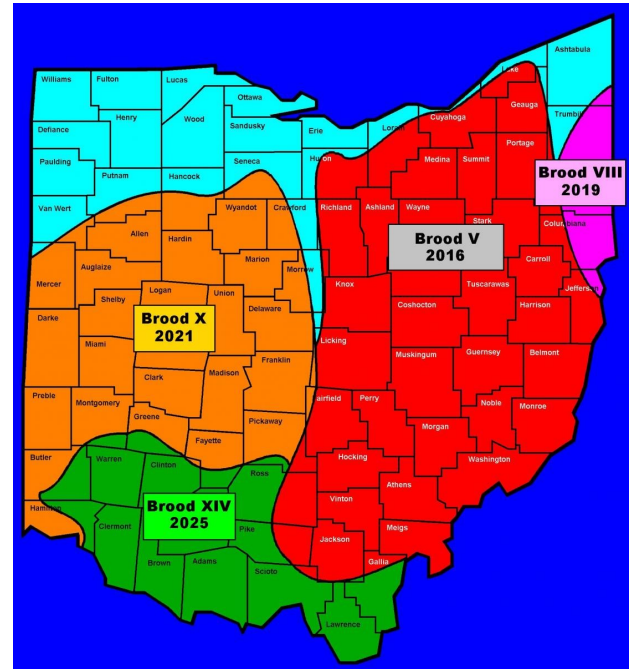
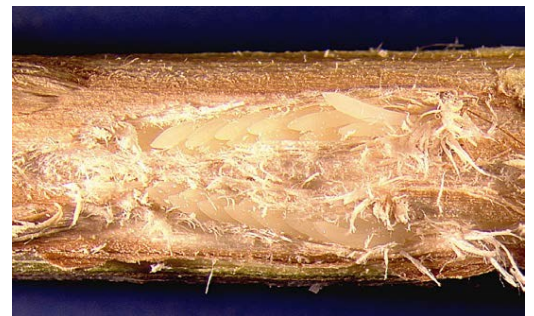


Figure 1. Periodical cicada brood map.



Cicada eggs in tree branch.

Damage is also done by the nymphs that suck sap from roots. Prolonged feeding by nymphs on a tree's root system may reduce plant growth and fruit production. Cicadas do not bite or sting and have no known toxic chemicals. Adult cicadas are usually a nuisance by their sheer numbers and loud, piercing call. Cicadas have fluttered into automobiles and frightened drivers, leading to traffic accidents. Emerging cicadas may also be consumed by dogs and cats, but they cause no harm to these animals. These pets occasionally will consume so many of the cicadas that they regurgitate or become constipated.

Control Tactics

Periodical cicadas are especially damaging to young plants that have the most desirable branch size for egg-laying. This is especially important in tree nurseries. Large, established trees can withstand considerable flagging.

CULTURAL CONTROL: DELAY TREE PLANTING

If a periodical cicada emergence is predicted, it may be best to postpone new orchard plantings until the following spring. Home gardeners are encouraged to delay planting until late summer or fall, after the adult cicadas have died.

CULTURAL CONTROL: PREVENT EGG-LAYING

Trees in small orchards or yards can be protected with nylon netting or cheesecloth during the egg-laying period. The netting should have a mesh of no less than $\frac{1}{4}$ inch and should be placed over the trees when the first male songs are heard. The netting should be tied to the trunk beneath the lower branches and can be removed after adult activity has ended. Eggs may also be removed by pruning out destroyed twigs.

CHEMICAL CONTROL: NOT RECOMMENDED

Insecticide treatments are typically not recommended. However, if young trees are present and cicadas are in the area, treatment may be warranted. Registered products may be applied to deciduous trees and shrubs. These products should be applied prior to egg-laying. Blooming trees and plants should be avoided to reduce nontarget effects to honeybees. During persistent cicada activity, short residual activity pesticides will have to be applied every week or two until flight ceases. Before using any pesticide, always read the label, follow the directions and take safety precautions.



Flagging caused by oviposition.

This fact sheet is a revision of HYG-2137.

Topics:

[Home, Yard and Garden](#), [Horticulture](#), [Insects and Pests](#)

Tags:

[cicadas](#), [periodical cicadas](#), [annual cicadas](#), [dog-day cicadas](#), [controlling cicadas](#)

Program Area(s):

[Entomology](#)

Originally posted Apr 1, 2015.

CICADAS ARE:

- Insect in Order Hemiptera
- 1.5 - 2 Inch Long
- Have Piercing-Sucking Mouthpart
- Wings Held Tent-Like Over Their Body
- Periodical and Annual Species
- "Sing"
- Annual Cicadas (AKA Dog-Day Cicadas)
- Emerge Yearly
- Green and Brown in Color
- Periodical Cicadas- Regional Broods
- Emerge Every 13 or 17 Years in Mass
- Black and Red/Orange in Color



Periodical Cicada

Member Meetings Ideas for 2025 & 2026 ?

- ✦ Got ideas or suggestions for future CLA Member Meetings?
- ✦ Know of any great speakers you would like to hear address the members?
- ✦ Have you found a location that members just have to see?
- ✦ Ideas for topics that will qualify for CEU's?

Please share them. Send your ideas / suggestions to:

Info@columbuslandscape.org

April 09, 2024

ODA Issues Quarantine in Southwest Ohio for Invasive Box Tree Moth

April 09, 2024



The invasive box tree moth was first confirmed in Ohio in June 2023 (USDA)

The Ohio Department of Agriculture (ODA) is issuing a quarantine for six counties in southwest Ohio to prevent the spread of an invasive insect – the box tree moth.

Beginning April 11, 2024, Butler, Clermont, Hamilton, Greene, Montgomery, and Warren counties will have regulations in place restricting the movement of boxwood shrubs out of the area. ODA is encouraging landscapers and residents in these counties to check the quarantine boundaries and not transport the plants outside of the quarantined area.

Box tree moths were detected in Ohio in June 2023, near the border of Hamilton and Clermont counties and they have been confirmed in the quarantined counties listed above. Box tree moths are an invasive pest from East Asia that poses a threat to boxwood plantings and the horticulture industry. Boxwood is an important ornamental shrub that is a valuable part of Ohio's nursery stock economy. Federal and state officials are asking industry and the public to report suspected box tree moth sightings through ODA's [reporting tool](#).

Ohio Department of Agriculture plant health inspectors and United States Department of Agriculture staff will be conducting inspections and placing traps to monitor populations. Box tree moths are not a threat to Ohio's native plants.

Look for and report any potential infestation by following these steps:

- ✦ Familiarize yourself with the [insect's appearance](#) and evidence of damage on boxwood shrubs.
- ✦ Check any boxwood plants you have for signs of box tree moth life stages.
- ✦ If you find any evidence of infestation, take a picture, and [report it](#).

Evidence of damage include chewed, cut, or missing leaves, yellowing or brown leaves, white webbing, and green-black excrement on or around the plant.

Box tree moth caterpillars are green and yellow with white, yellow, and black stripes and black spots. Adult box tree moths are nocturnal and have white, slightly iridescent wings, with an irregular thick brown border.

Landscape professionals, nursery, and others in the green industry can contact the Plant Pest Control Section if they have any questions about the new regulation at 614-728-6400.

Please report any box tree moth sightings to ODA's Division of Plant Health.

Box Tree Moth (BTM)

The box tree moth (*Cydalima perspectalis*) is native to temperate and sub-tropical regions in Asia. It was first reported in Europe in 2007, after which it spread rapidly across Europe into Western Asia and Northern Africa. Infestations were found in Ontario, Canada in 2018, and was confirmed to be found in a Canadian nursery in the spring of 2021. The pest was later found in New York state and Michigan in 2022. It was first detected in southeast [Ohio](#) in June of 2023.



From left to right: box tree moth egg mass, larvae, and adult. Images courtesy of Walter Schön, www.schmetterling-raupe.de/art/perspectalis.htm, and Courtesy of Matteo Maspero and Andrea Tantardini, Centro MiRT - Fondazione Minoprio

8 Practical Alternatives to Boxwood Shrubs

Looking to replace boxwood shrubs with something more disease resistant?
Here are eight recommended substitutes that will give you a similar look without all the fuss.

Contributors: Susan Martin



[Sprinter® boxwood](#)

Boxwood (*Buxus*) is one of the most widely planted evergreen shrubs in the world. Since it is adaptable to so many different growing conditions and is easy to maintain, people often plant boxwoods in great numbers to make tidy hedges. Shearing them into formal shapes won't hurt them a bit, and they will reward you with year-round interest.

Unfortunately, boxwood blight, a lethal disease caused by an easily spreadable fungus, has become prevalent in the U.S. since coming in from Europe a decade ago. Black spots on the leaves and stems, followed by defoliation are telltale signs of boxwood blight. There is no good treatment for it and once one of your boxwood shrubs has contracted it, the fungus can quickly spread to your other boxwoods.

There is some good news, however. Breeders are working diligently to develop and test varieties of

boxwood that are resistant to the blight. Our [North Star®](#) and [Sprinter®](#) boxwoods have been shown to have very good resistance to boxwood blight in trials.

Substitutes for Boxwood

If you'd like to find an alternative to boxwood that is not susceptible to the boxwood blight fungus, check out the eight plants shown below. Some look so much like boxwood that you'll be hard pressed to tell the difference. Others perform a similar function as a boxwood hedge but with a slightly different appearance that you may like even better.



[Gem Box® inkberry holly](#)



[Strongbox® inkberry holly](#)

Inkberry Holly

[Gem Box®](#) and [Strongbox®](#) *Ilex glabra*

The closest boxwood lookalike you'll find is inkberry holly, specifically these two varieties that were developed expressly for this purpose. Inkberry holly has small, oval-shaped leaves that look more like a boxwood leaf than a traditional holly leaf that has spiny points. They are soft to the touch and won't be scratchy when you walk by. Like boxwood, these evergreen plants can be sheared into balls, boxes and hedges.

Inkberry holly is native to coastal states from Maine to Texas and is hardy in zones 5-9. It grows a bit faster than boxwood but is not drought tolerant. It will be happiest in moist, acidic soil in sunny or partly shaded conditions. These varieties reach 2-3' tall, with Gem Box having a slightly more rounded shape and Strongbox growing a bit wider than tall.



[Brass Buckle® Japanese holly](#)

Japanese Holly

[Brass Buckle®](#) *Ilex crenata*

For a shorter, brightly colored hedge around your patio, along your front pathway, or in containers, choose Brass Buckle Japanese holly. Its leaves are similar to inkberry holly but are slightly smaller and stay bright yellow all season long. This plant thrives in part shade conditions but even when grown in full sun, its lightly colored foliage is burn-resistant.

This is one of the most dwarf Japanese hollies you'll find, maturing to just 12-18" tall. That makes it ideal for use as a low growing border in front of a bank of roses or other mid-sized shrubs and perennials in the landscape. Like boxwood, it is easy to shear into a formal hedge. Hardy in zones 6-8.



[Juke Box® pyracomeles](#)

Pyracomeles

[Juke Box® Pyracomeles](#)

Chances are you've never heard of a shrub named *Pyracomeles*. It may not have an easy common name to remember like boxwood, but we promise that it is much easier to grow than to pronounce! This dwarf evergreen shrub forms a mound of tiny, shiny dark green leaves on thin stems. If left unpruned, it will form a thick, mounded, evergreen mat. With a little shearing after the new growth flushes out in spring, it is easily shaped into a traditional boxwood-like ball, square or hedge.

Juke Box pyracomeles grows 1-3' tall and wide in full sun to part shade conditions in zones 7-9. Though it has survived the winter for several years in zone 6, it typically sustains some winter damage to its evergreen foliage which is why we recommend it for areas further South. Any well-drained soil and average moisture will keep this plant happy.



[Tater Tot® globe arborvitae](#)

Globe Arborvitae

[Tater Tot® Thuja occidentalis](#)

By now, you are starting to see the theme here. There are lots of densely rounded, boxwood-like shrubs you can substitute for *Buxus* in your landscape without the worry of boxwood blight. Next up is this super cute evergreen globe arborvitae that's worth growing for its name alone.

Tater Tot arborvitae has a shape much like its namesake, forming a slightly taller than wide mound of dark green, aromatic, fan-shaped leaves. Very little to no pruning at all is needed to achieve the look you see here. If your goal is to create a tighter hedge, space the plants about one foot apart. Your Tater Tot hedge will grow up to 2' tall unless you prefer to keep it slightly shorter by lightly shearing it back in spring. Full sun to part shade and well-drained soil are what this shrub needs to thrive in zones 3-7.



[Anna's Magic Ball® globe arborvitae](#)

Globe Arborvitae

[Anna's Magic Ball® *Thuja occidentalis*](#)

If you love the look of Tater Tot arborvitae but need something a little smaller, try Anna's Magic Ball. It's similar in size and shape to a bright yellow bowling ball, growing just 10-15" tall and wide. Those shown in the picture above are nearly full grown, so you can get an idea of how they could work for you as a short, whimsical, evergreen hedge. Try it in full sun where its lightly colored foliage won't burn, or in a partly shaded location that sees 4-6 hours of sun each day.

Like Tater Tot arborvitae, this plant is easy to grow in any well-drained soil in zones 3-7. This species of arborvitae is native to much of the eastern U.S. and Canada. Very little to no pruning is needed to keep its densely spherical shape.



[Stonehenge Dark Druid® yew](#)

Yew

[Stonehenge Dark Druid® *Taxus x media*](#)

If you are looking to plant a hedge in partial to full shade, you'll find this is the most shade tolerant plant of the eight described in this article. It's one of the primary reasons people choose to grow [yews](#), coupled with their easygoing nature. If your shade also comes with deer, however, you may need to protect them with animal repellent or choose an alternative shrub. Yews also grow well in full sun conditions.

Yews mature slowly but are very long-lived, which makes them ideal for planting as a hedge. They are easy to shear into just about any shape you can dream up, from a classic boxy hedge to the whimsical characters you'll see [yews](#) carved into on the great lawn of the world-renowned Longwood Gardens.

Stonehenge Dark Druid forms a 2-3' tall by 3' wide mound of dark green, soft needlelike foliage. It retains its color beautifully through all four seasons and is very cold hardy, thriving in zones 4-7.



Waxwing™ Lime mirror bush

Mirror Bush

Waxwing™ Lime *Coprosma repens*

Here's a fun boxwood alternative for our friends in the South. This zone 9-11 hardy evergreen shrub is nicknamed "mirror bush" for its extremely glossy foliage that reflects the glistening summer sun.

Waxwing Lime's leaves are a swirling mix of yellow, lime green and mahogany purple tones.

Varieties with predominantly gold and orange foliage are available, too.

This shrub typically grows wider than tall, standing 1 to 2 ½' and spreading up to 3'. It is easy to shear like boxwood into a tight, low hedge or bed edging. You could also choose to let it grow into its natural form and plant it amongst your flowers in garden beds and containers. Coprosma thrives in sunny to partly sunny spaces with average soil. You may also appreciate that it is deer resistant.



Perfecto Mundo® Double

Pink *Rhododendron*

Reblooming Azalea

This amazing azalea does something your boxwood hedge could never do – it blooms! Gorgeous soft pink, double flowers adorn this shrub in the springtime. After taking a bit of a rest, it blooms again from midsummer to frost. Its bright green, evergreen leaves are similar in shape to boxwood and the plant typically grows 2-3' tall and wide. Perfecto Mundo azaleas come in more colors, too. Once you have success with one, you'll want to collect them all.

These reblooming azaleas bloom on both old and new wood, so the best time to prune them is immediately after its spring flowers fade. Trimming the plants lightly encourages new growth, and with new growth comes even more flowers.

This azalea is hardy to zone 6b and is better suited to milder coastal areas of zone 6b than harsher Midwestern sites. If you wish to plant it in zone 6b, choose a sheltered location in sun or part shade and mulch around its roots for added protection.



Support the Future Stars the Green Industry.

The Columbus State Community College Landscape Design and Management program is actively seeking donation to help support students throughout the academic year. Donations accepted anytime for any amount.

Contact **Richard K. Ansley**, Professor / Program Coordinator

Phone: 614-287-5031 or Email: ransley@csc.edu

Many CLA Members have employees who have been part of this program or have been involved themselves. Continue and encourage students to join the Green Industry. Also, offer to do your part. Be a speaker, be a mentor, support interns.

Something New -Service Area Maps

In an effort to provide your potential new clients with more information, I am trying to include Service Area Maps to our website and your information pages.

In the past when someone has called our phone number searching for a Green Industry Professional from our membership, the area of town served can be a factor of who to contact and who to hire.

I have just started on the details and I will be asking you sometime this year to provide a map of the areas of Central Ohio that you serve. I know some of you have limited areas for your work and some of you have most if not all of Central Ohio as your service area. I am just trying to use our website to it fullest potential, help potential new clients and help you as well. I would also like to have a uniform type or style of map to make it as uniform as possible.

- Thank you

The 2024 Member Directory (Traditional Version)

is Available Online on the CLA Website.

The directory is located within the Professional Membership Tab.

Thank you to all CLA Members who paid their Membership Dues and may have updated their information.

You will also find forms, membership application and the CLA By Laws in this version.

New Feature...

Provided by our web server Wild Apricot.

The Online Member Directory feature is up and running. ***I have created a Our Members Tab on the Home Page next to the Find a Pro Tab.*** This information comes directly from your membership information and seems to be constantly updating.

Potential clients can look through the listings, select a specific company and with a click have the listing of the services you provide and web site link. With this feature, it is even more important to have your membership website link and services offered information updated.

Sponsors/ Advertisers Wanted...

The 2024 calendar for Member events is being planned right now. If you have suppliers who would be interested in becoming a sponsor / advertiser for the Weekly Email, NewScape Express issues or the Member Directory, PLEASE give me a contact name and number. I will reach out to them.

THE PARTICIPATING COMPANIES IN THE 2024 HOME AND GARDEN SHOW



Welcome New Members for 2024



Be on the safe side. When in doubt check with OSHA

<https://www.osha.gov/landscaping/standards>

U.S. DEPARTMENT OF LABOR

Occupational Safety and Health Administration

[Safety and Health Topics](#)

Landscape and Horticultural Services

Landscape and Horticultural Services

Standards

Landscaping and horticulture hazards are addressed in specific OSHA standards for general industry if work is considered maintenance activity and construction if work is considered building activity. This section highlights OSHA standards and documents related to landscape and horticulture services.

OSHA Standards

Frequently Cited Standards

OSHA maintains a listing of the most frequently cited standards for specified 6-digit North American Industry Classification System (NAICS) codes. Please refer to OSHA's [Frequently Cited OSHA Standards page](#) for additional information. For *Landscape and Horticultural Services*, use NAICS code 561730 in the NAICS search box.

<https://www.osha.gov/landscaping/standards>

Columbus Area Office

200 North High Street, Room 620

Columbus, OH 43215

(614) 469-5582

(614) 469-6791

Calendar of Upcoming Events

April

April 28 -National Arbor Day. .

May

May 5 – Cinco de Mayo

May 12 – Mother’s Day

May 27 -Memorial Day

May 28 -2025 Home and Garden Show Informational Meeting

June

June 3-9 -The Memorial Tournament

June 16 - Father’s Day

May and June bring Graduation and Wedding Seasons as well as schools releasing for the summer.

Spring and Summer Safety for Outdoor Workers

- #1. Use Personal Protective Equipment
- #2. Watch The Forecast
- #3. Wipe Mud Off Of Gloves And Boots
- #4. Don’t Forget Sunscreen
- #5. Stay Hydrated



Columbus Landscape Association

The Columbus Landscape Association was organized in 1926 by a small group of landscapers and nurserymen in the Columbus. Now our association includes nearly one hundred members from the Central Ohio area.

Green Industry Professionals. Become a part of the decision-making process that will affect your business and the industry as a whole. Become better informed through our educational programs and become part of the CLA family. Above all, present your organization as one committed to the highest standards landscaping.

Membership Benefits include:

- ◆ The opportunity to participate in the Central Ohio Home & Garden Show (Spring and/or Fall) and annual Outdoor Living and Landscape Tour
- ◆ Member meetings are held on the second Tuesday of the month throughout the year. Members are notified of meeting time and location through email.
- ◆ Educational and networking opportunities, such as CLA-sponsored seminars and educational speakers at CLA meetings.
- ◆ Inclusion in the Member Directory and the Find A Pro page on the CLA website.
- ◆ Access to the CLA's bimonthly newsletter, *CLA NewScapes Express*, which contains association and industry information.
- ◆ Committee and Board participation opportunities.
- ◆ Become involved in community activities, including support of the Chadwick Arboretum, education of the public on planting and watering techniques, promotion of local landscaping laws and participation in Arbor Day activities. These are just a few of the activities of the CLA.

The Columbus Landscape Association gives strength, effectiveness and identity to Central Ohio's Green Industry.

"The mission of the Columbus Landscape Association (CLA) is to serve its members by providing them with technical and professional education, by providing them with quality services, by representing their professional interests in central Ohio and by promoting the 'Green Industry'".

To Join Go to the CLA website:

info@columbuslandscape.org

**Professional Membership Pulldown
Join Tab.**

Follow instructions.

Columbus Landscape Association

PO Box 963

Columbus, OH 43216-0963

Phone: 614-450-0430

Fax: 614-876-4862

info@columbuslandscape.org

www.columbuslandscape.org

[Facebook.com/columbuslandscape](https://www.facebook.com/columbuslandscape)

Columbus Landscape Association Membership Application

* Required Information

Hard Copy Application

*Organization
/Company _____

Email _____

*Phone # _____

Mobile Phone # _____

(for Text Alerts)

*Address 1 _____

Address 2 _____

*City _____

*State _____

*Zip Code _____

Website URL _____

*Licenses/Certificates ((Check all that apply)

CERTIFIED ARBORIST ON STAFF

CERTIFIED IRRIGATION AUDITOR ON STAFF

CERTIFIED IRRIGATION CONTRACTOR ON STAFF

CERTIFIED LANDSCAPE PROFESSIONAL ON STAFF

CERTIFIED LANDSCAPE TECHNICIAN ON STAFF

EDUCATOR

HOME IMPROVEMENT CONTRACTOR ON STAFF

NURSERY (DEALER, GROWER OR STOCK INSPECTION)

OCNT ON STAFF

OCNT - MASTER ON STAFF

PESTICIDE APPLICATOR LICENSE ON STAFF

SPECIALTY ITEMS/MATERIALS

Continue on Next Page

*SERVICES/PRODUCTS PROVIDED (select all that apply)

AQUATICS/WATER GARDENS/FOUNTAINS

ARBORIST

COMPOST/MULCH/TOPSOIL

EDUCATION

GARDEN CENTER - RETAIL

HORTICULTURE CONSULTANT

INTERIORSCAPES

IRRIGATION INSTALLATION

IRRIGATION SUPPLIES

LANDSCAPE CONSTRUCTION

LANDSCAPE DESIGN

LANDSCAPE LIGHTING

LANDSCAPE MAINTENANCE

LANDSCAPE PLANTING

LAWN MAINTENANCE

MOWING COMMERCIAL

MOWING RESIDENTIAL

PESTICIDE APPLICATION

PUBLIC GARDEN

SEED/LAWN INSTALLATION

SNOW REMOVAL COMMERCIAL

SNOW REMOVAL RESIDENTIAL

SOD/TURFGRASS

STONE/PAVER SUPPLIER

STONE/PAVER/CONCRETE INSTALLATION

WHOLESALE PLANT MATERIAL

EQUIPMENT DEALER/SALES/RENTAL

OTHER=GOODS/SERVICES NOT LISTED

Return Completed application and Membership Payment to:

Columbus Landscape Association
PO Box 963, Columbus, Ohio 43216
Phone- 614-741-5449
Info@columbuslandscape.org

A Member Perk to Share...

Just contact me and I will give you the passcode information. cla.columbus@gmail.com



Congratulations! CZ Affiliate Columbus Landscape Association has signed up for wild savings on admission tickets to the Columbus Zoo and Aquarium/Zoombezi Bay. Getting your deeply discounted tickets is easy and convenient! Just use the CZ Affiliate Columbus Landscape Association ticket shop link to purchase and print your tickets at home. Then, bring your tickets with you when you visit and go straight to our ticket turnstiles.

Don't waste time, start your adventure today and explore the wonders of wildlife from around the world at the Zoo or splash into the wildest water park in central Ohio, Zoombezi Bay.

TO ACCESS YOUR SPECIAL TICKETS, click the link below, then log into the site with the username and password provided.

Program Benefits

- Best year-round savings!
- FREE for companies to sign up
- No deposit or down payment required by your organization
- Easy to administer without time consuming paperwork or the handling of tickets
- Payment is made by employees or members directly to us by using a credit card at the time of purchase
- Tickets are good any day during the 1 regular operating season
- Your account will automatically update for the 2 season
- Offers convenience of tickets in-hand for immediate entrance upon arrival
- Promotional materials readily available for internal use

Single Day Tickets	Price per ticket
Zoo General Admission	\$15 (reg. \$21.99)
Zoo Ages 3-9/Senior 60+	\$10 (reg. \$16.99)
Zoombezi Bay General Admission <i>Includes admission to the Zoo</i>	\$32.99 (reg. \$42.99)
Zoombezi Bay Ages 3-9/Senior 60+ <i>Includes admission to the Zoo</i>	\$29.99 (reg. \$36.99)
Parking Passes	\$10

*Prices subject to change

Membership/Season Pass 2022	Franklin County	Non-Franklin County
Individual	\$54 (reg. \$69)	\$64 (reg. \$69)
Individual Plus	\$84 (reg. \$89)	\$104 (reg. \$109)
Family	\$124 (reg. \$129)	\$164 (reg. \$169)
Family Plus	\$174 (reg. \$179)	\$224 (reg. \$229)
Gold Individual	\$164 (reg. \$169)	\$174 (reg. \$179)
Zoombezi Bay	\$119.99	\$119.99
Zoombezi Bay Child (3-9)	\$95.99	\$95.99

*Prices subject to change

Prices are being updates and have increased slightly



SPONSORSHIP / ADVERTISEMENT FORM

The Columbus Landscape Association offers many opportunities for member firms to promote their business. If you are interested in placing an advertisement in our newsletter, ***NewScapes Express***, in our member directory, on our website, our Landscape Tour Directory or provide sponsorship for our Member Meetings, please complete and return the form below.

CLA WEBSITE. Market your firm on our website, www.columbuslandscape.org. Your logo in full color will be prominently displayed with your firm's contact information and link to your website on our sponsor page. Your ad will run for one year.

Website Sponsorship 1 year \$200.00 (please provide Company Logo)

Member Directory. Provided in print to all members. Released March of even years, Updated provided digitally on uneven years.

Meeting Sponsor: Be recognized for your contribution to support Food, Refreshments and / or Materials to a Member Meeting. Please circle your selection. You will be contacted for details.

Sponsor: \$ 250.00 Sponsor: \$ 500.00 Open Sponsor \$ _____ toward the next meeting

NEWSCAPES EXPRESS. Published 8 times per year. Prices are per Advertisement. Circle your selection.

Size	1X	4X	8X
Full Page	\$60.00	\$50.00	\$40.00
½ Page	\$45.00	\$35.00	\$25.00
¼ Page	\$30.00	\$20.00	\$15.00
Business Card	\$25.00	\$15.00	\$10.00

Please Run my ad in the following issues: please circle your choice

All Eight Issues	January	February-March	April
July	August-September	October	November-December

Please Complete the Following Information Below:

Company Name: _____

Contact Name: _____

Business Address: _____

City / State/ Zip: _____

Phone #: _____

Email Address (Required) _____

Total Amount Due: \$ _____

(Website, Member Directory, NewScape Express Ads, Outdoor Living Tour, Member Meeting Sponsorship)

My Check or Money Order is enclosed, Made Payable to : Columbus Landscape Association

Please bill my Credit Card for the total amount due: Name on Card: _____

Visa / MC number _____ Exp. Date: _____

Signature (Required) _____ Security Code: _____

Please mail this completed form and payment to:
 Columbus Landscape Association PO Box 963, Columbus, Ohio 43216
 Phone: 614-450-0430 or info@columbuslandscape.org

Spread Your Good News

Member firms with good news to share are welcome to submit articles and information for the *NewScape Express*.



Serving the Green Industry in Central Ohio Since 1926

Contact Us

Columbus Landscape Association
PO Box 963
Columbus, OH 43216
info@columbuslandscape.org

cla.columbus@gmail.com

614.741.5449

Visit us on the web at
www.columbuslandscape.org

Columbus Landscape Association
PO Box 963,
Columbus, Ohio 43216

PLACE
STAMP
HERE